



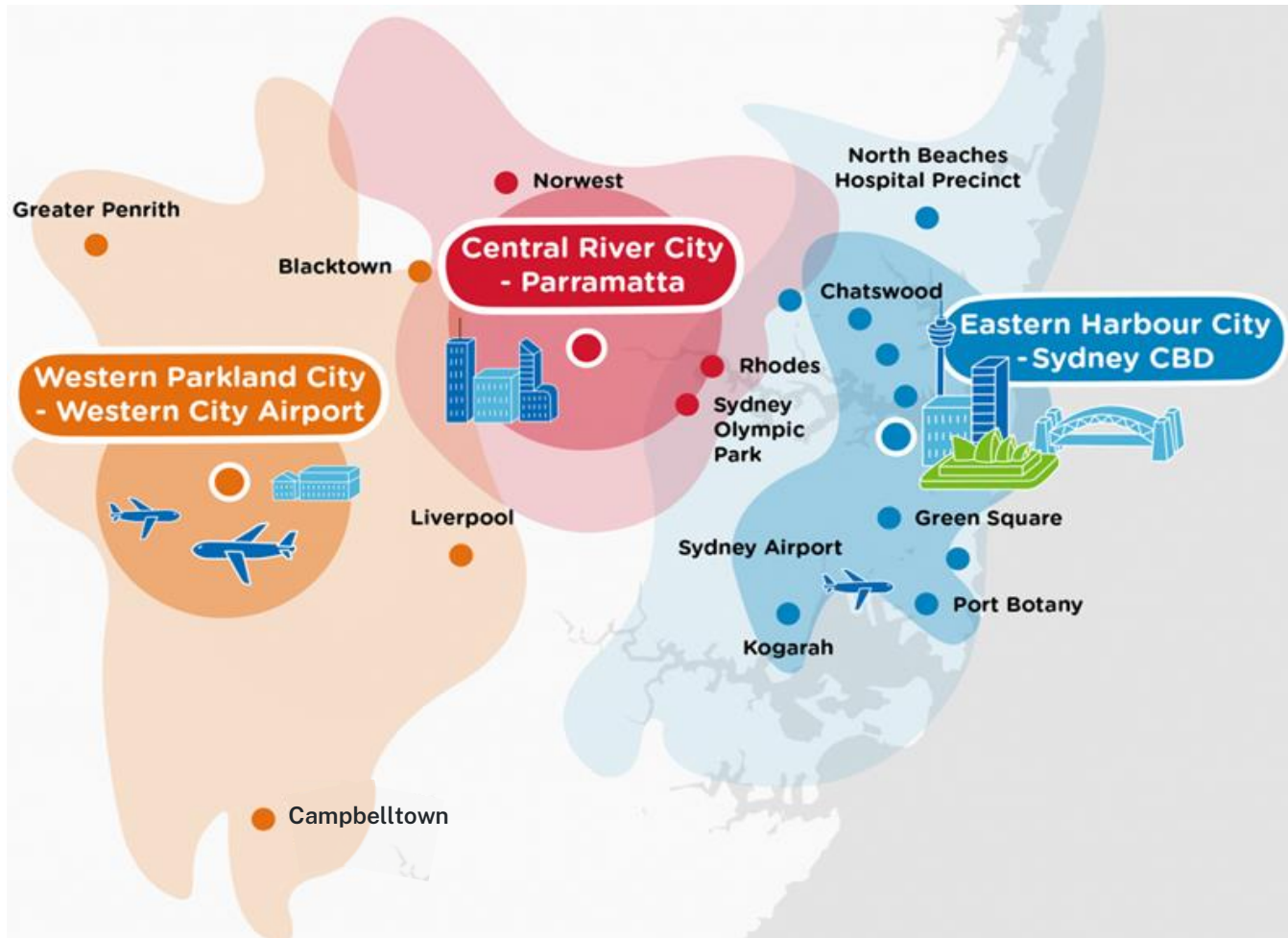
Western Parkland City Authority



Supporting businesses to establish, grow and innovate in the Western Parkland City

December 2022

Western Parkland City Authority: Driving economic growth across the region.



The Western Parkland City is a rapidly growing area of Sydney, encompassing the eight local government areas of: Blue Mountains, Camden, Campbelltown, Fairfield, Hawkesbury, Liverpool, Penrith and Wollondilly.

Western Parkland City Authority has a number of roles including:

- Supporting existing businesses to grow and innovate
- Attracting new businesses to establish in the region
- Designing the new city of Bradfield in the Western Sydney Aerotropolis

Western Sydney International (Nancy-Bird Walton) Airport: International, curfew-free airport opens in 2026.



Western Sydney International (Nancy-Bird Walton) Airport will bring an estimated **5 million passengers** per year upon opening in 2026, and 220,000 tonnes per annum of **cargo-handling capacity**.

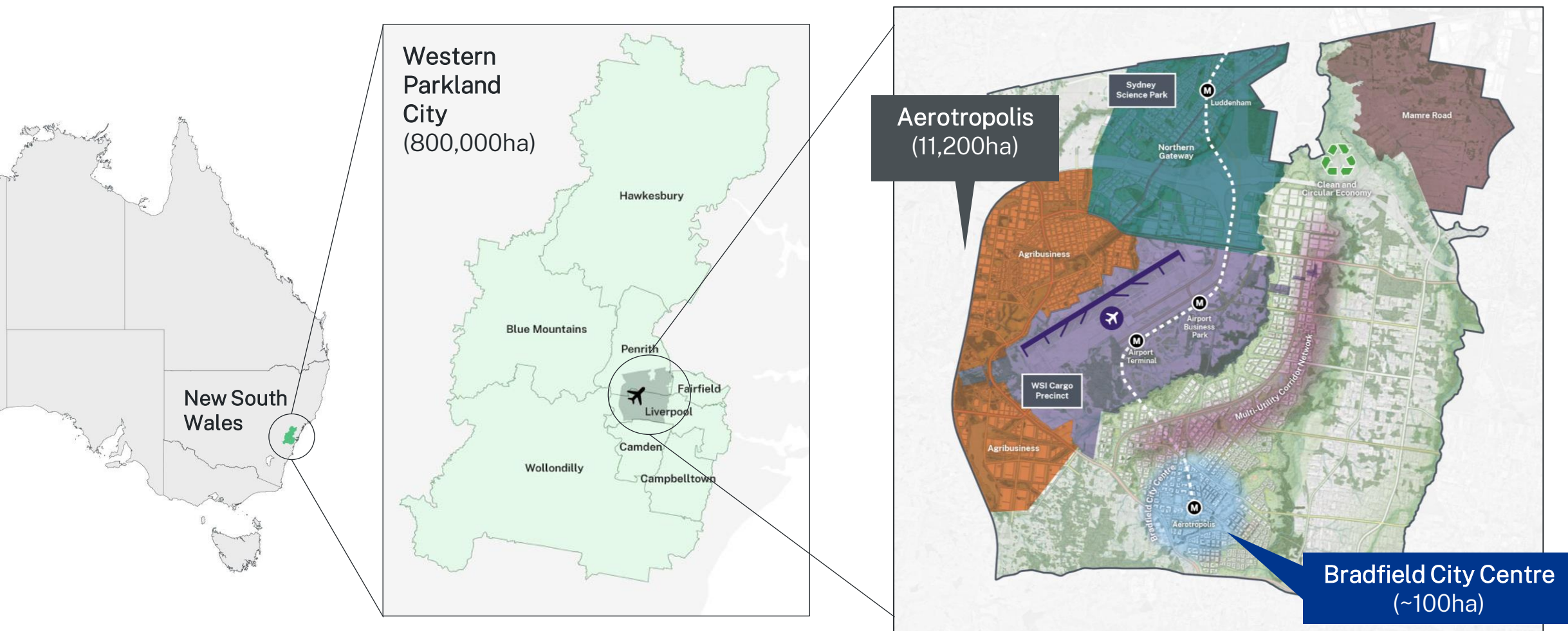
Construction of the airport is well underway:

- 91% of earthworks completed
- 11% of terminal works completed
- 6% of airside works completed.

1

Building the new city of Bradfield in the Western Sydney Aerotropolis

Western Sydney Aerotropolis: A thriving economic hub under development



Western Sydney Aerotropolis: Building the new city of Bradfield



A 22nd Century City, providing a cyber-secure environment



Built on the doorstep of Western Sydney International Airport



Indo-Pacific hub for advanced and emerging industries



Centre for innovation, education and skills development

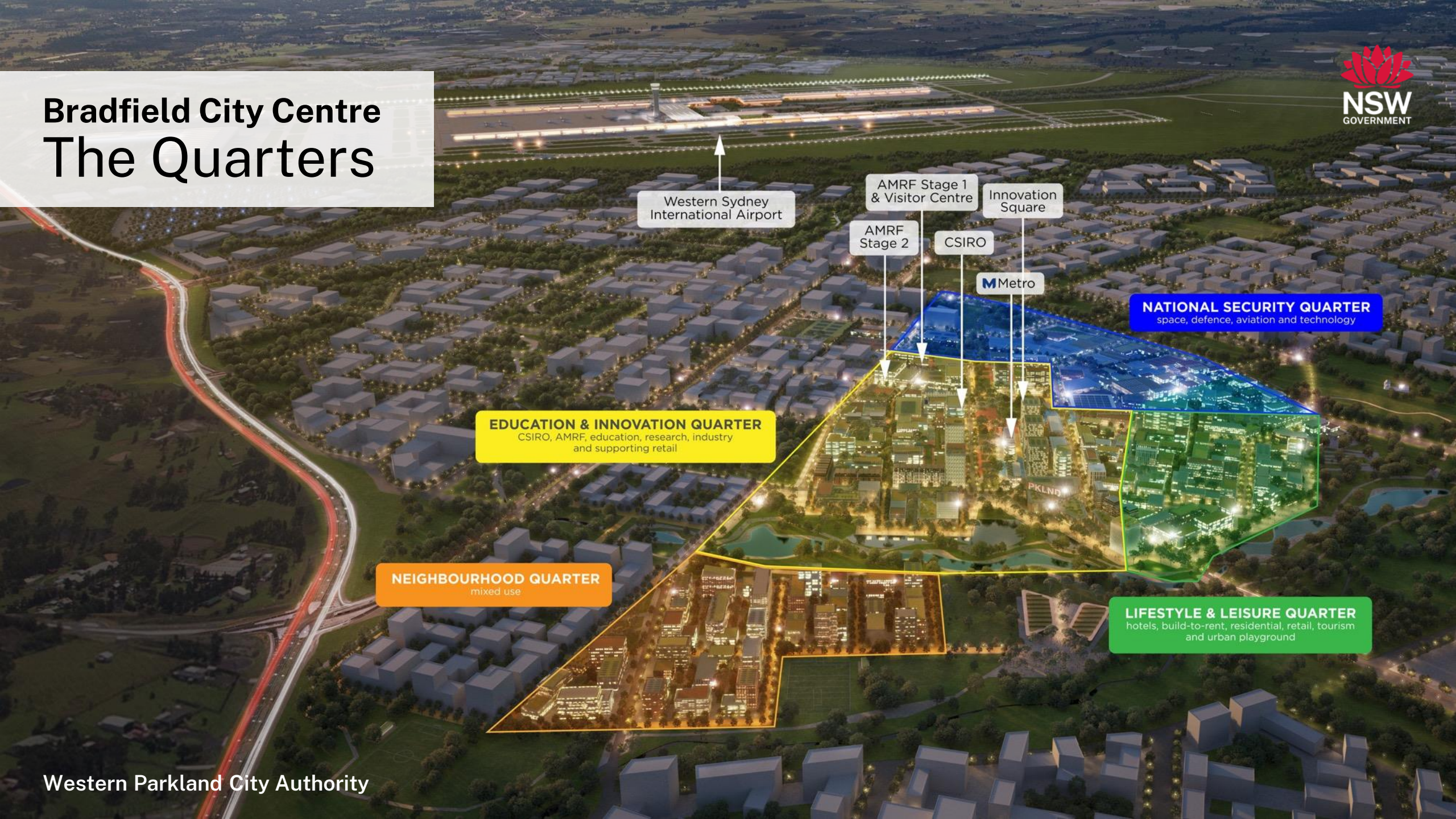


Hydrogen ready, net zero and sustainable



Vibrant 24/7 retail, entertainment and cultural options

Bradfield City Centre The Quarters



Western Sydney
International Airport

AMRF Stage 1
& Visitor Centre

Innovation
Square

AMRF
Stage 2

CSIRO

Metro

NATIONAL SECURITY QUARTER
space, defence, aviation and technology

EDUCATION & INNOVATION QUARTER
CSIRO, AMRF, education, research, industry
and supporting retail

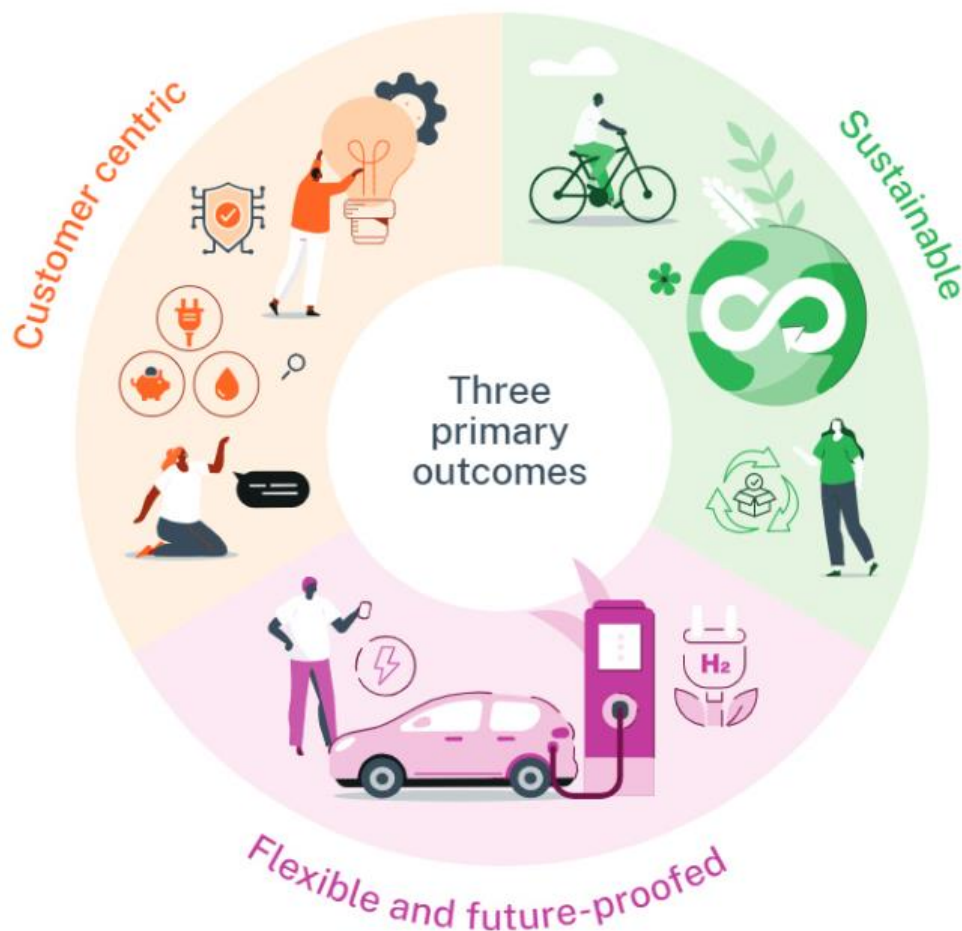
NEIGHBOURHOOD QUARTER
mixed use

LIFESTYLE & LEISURE QUARTER
hotels, build-to-rent, residential, retail, tourism
and urban playground

2

Exploring new and innovative solutions for energy, digital, cyber and circular economy solutions

Designing the new city of Bradfield: Invitation to participate in a market sounding.



With master planning underway, Stage 1 of the Bradfield City Centre offers a unique opportunity to **explore solutions for energy, digital, cyber and circular economy systems.**

Registrations to participate in a market sounding are now open, and close on 24 February 2023.

The early feedback received will help shape WPCA's approach to the market and its requirements when it begins its procurement activity in mid to late 2023.

Register to receive the information pack:
<https://www.wpca.sydney/energy-digital-cyber-and-circular-economy-systems/>

Designing the new city of Bradfield: Three key outcomes sought.



Customer Centric

- 1 Deliver reliable, affordable, safe and competitive services.
- 2 Deliver cutting edge end-to-end customer and citizen experiences in the precinct.
- 3 Offer end customers retailer choice for services in the precinct.
- 4 Be a fully digital precinct enabled with high-capacity fibre, ultra-high speed connections and next generation mobile coverage.
- 5 Deliver a world leading cyber smart city, attractive to advanced industries.



Sustainable

- 1 Achieve net-zero operational carbon emissions by 2030.
- 2 Minimise demand for and consumption of energy and water in the precinct.
- 3 Minimise waste to landfill, target zero waste by 2030 and promote a circular economy.
- 4 Be resilient to climate impacts and mitigate heat impacts in the precinct.
- 5 Support the creation of local industry formation in clean, smart and sustainable industries.

Designing the new city of Bradfield: Three key outcomes sought.



Flexible and future-proofed

- 1 Be adaptive to emerging technologies, digitisation and automation.
- 2 Be e-vehicle, autonomous vehicle and hydrogen ready.
- 3 Provide an energy mix for the precinct for flexible, resilient and secure operations.
- 4 Provide redundant digital capacity in readiness for global communication growth.
- 5 Utilise the precinct as a pathway to learn, evolve and scale up innovation across the Aerotropolis and Western Parkland City.

Designing the new city of Bradfield: Seeking solutions under three key themes.

Energy

Energy services in Stage 1 of the Bradfield City Centre will be customer centric, delivering a reliable, competitive, safe, clean and smart service with net zero emissions.

Key initiatives

- District cooling
- Embedded energy network
- Electric vehicle charging
- Smart energy grid management

Digital and cyber smart

Stage 1 of the Bradfield City Centre will be a world leading digital precinct that is resilient and cyber smart. From day one, it will meet the digital and cyber needs of global organisations, residents, and visitors.

Key initiatives:

- Fibre optic network
- Cyber smart servicing
- Data management and storage
- Multi-functional poles

Circular economy systems

Stage 1 of the Bradfield City Centre will operate according to circular economy principles, including taking a robust approach to efficient resource use and waste management from day one.

Key initiatives:

- Circular economy hub
- Last mile logistics

Designing the new city of Bradfield: Seeking solutions: Energy



1. District cooling

District cooling system for buildings



Centralised chilled water system to cool buildings across the city centre

Reduced energy consumption and peak demand



3. Electric vehicle charging

Activating and encouraging electric vehicle use



Electric vehicle charging points for public and private vehicles

Vehicle to grid charging capability



2. Embedded energy network

Embedded energy network at the building scale



Reduced network costs

Maximised benefits from energy storage and solar photovoltaic installations



4. Smart energy grid management

Smart energy system to manage the grid










Public space energy storage

Public space solar photovoltaic installations

Designing the new city of Bradfield:

Seeking solutions: Digital and cyber smart

	<h3>5. Fibre optic network</h3>  <ul style="list-style-type: none"> Fibre optic backbone network Supported by communications centres Accommodating 5G/6G technology in discrete centres off streets and buildings 		<h3>7. Data management and storage</h3>  <ul style="list-style-type: none"> Enabling smart mobility Enabling smart utilities Enabling IoT sensors
	<h3>6. Cyber smart servicing</h3>  <ul style="list-style-type: none"> Cyber resilient systems across the city Threat and vulnerability monitoring Incident response 		<h3>8. Multi-functional poles</h3>  <ul style="list-style-type: none"> Multi-function street-side poles Street lighting and mobile cells capability IoT sensors capability

Designing the new city of Bradfield: Seeking solutions: Circular economy systems



9. Circular economy hub



Sustainable and efficient resource use

Creating a centralised circular economy, reuse and recycling centre to maximise resource use and reuse



10. Last mile logistics



Efficient, electrified city-wide delivery

Providing a hub of operations for the centralised and streamlined delivery of goods to customers in the city centre

3

Supporting businesses to
establish, grow and innovate

Investor concierge service: Supporting businesses to establish and innovate



Briefings on the growth and opportunities across the region



Identification of **suitable sites** for future operations



Business case support including **economic analysis** and **skills data**



Coordination across key **government agencies** and **regulatory bodies**



Introductions to local **supply chain** and **research partners**



Access to world-class **workforce skills development** and training



Advice on **accessing grants** and government programs



Familiarisation visits to the Western Parkland City and Bradfield City Centre

NSW government funds: Developing renewable and low carbon manufacturing industries in NSW

Low Carbon Product Manufacturing Fund	Renewable Manufacturing Fund
Manufacturing of low carbon and zero emissions products and materials using commercialised technology.	Manufacturing of plant, equipment and processes needed to produce renewable energy and low carbon products (including electric vehicles) using commercialised technology.
Eligible example projects: <ul style="list-style-type: none"> ✓ low emissions building materials ✓ green chemicals ✓ power fuels and clean fuels ✓ agricultural products and feed ✓ equipment, plant or infrastructure for hydrogen end uses ✓ sharing industrial by-products and growing circular economy. 	Eligible example projects: <ul style="list-style-type: none"> ✓ components for renewable energy such as wind towers, solar, batteries ✓ electrification equipment to support switching from fossil fuels to electricity ✓ electric vehicle components and assembly ✓ hydrogen electrolyzers.

ROI submissions close
at 5.00pm AEDT on
28 February 2023.

New government grants: NSW Future Industries Investment Program

The NSW Future Industries Investment Program will provide **rebates for eligible expenses** to businesses investing in NSW-based projects that boost the productivity of the NSW economy.

This will include businesses that are seeking to **expand or develop NSW operations** and align with the priorities outlined in the NSW Industry Development Framework.

To be eligible, entities must:

- **Employ at least 20 FTE employees** at the time of application
- Have been operating for at least three years
- See other eligibility criteria on the webpage.

NSW Industry Development Framework

Emerging industries, with spillover benefits for the broader economy:

- ✓ Clean energy and waste
- ✓ Defence and aerospace
- ✓ Digital systems and software
- ✓ Medical and life sciences

Existing industries, with high trade exposure:

- ✓ International education
- ✓ Visitor economy
- ✓ Agriculture and agrifood
- ✓ Resources

Entities must commit to:

- Create at least 20 ongoing net new FTE jobs in NSW; or
- Invest a minimum of \$3 million in capital expenditure within NSW.
- Other criteria applies.

Eligibility Applications open 8/12/2022 9.00am, and close 13/01/2023 at 5.00pm (AEST).

Supporting businesses to establish, grow and innovate.

invest@wpca.sydney
<https://wpca.sydney/investment-attraction>